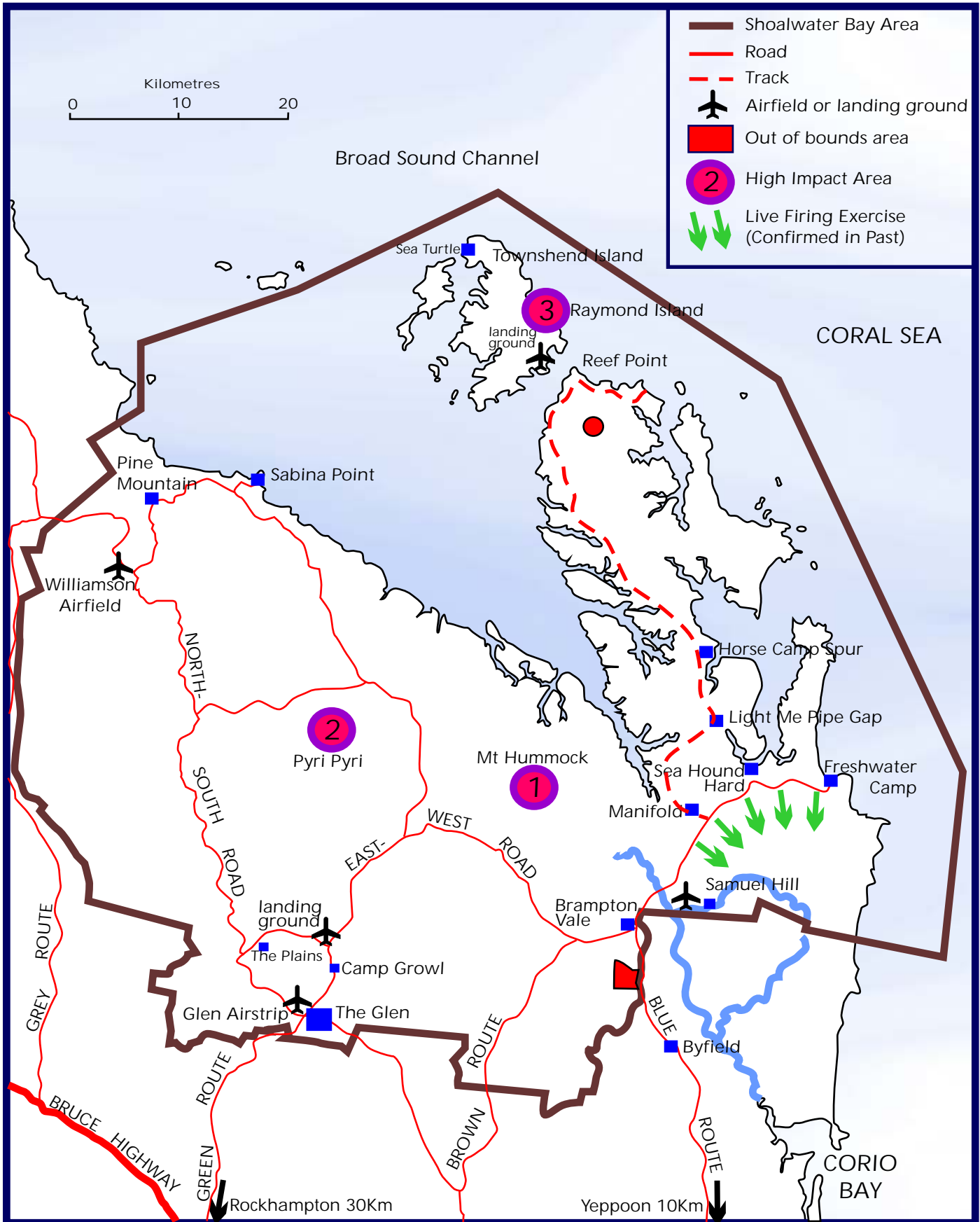


Department of Defence Infrastructure, Shoalwater Bay Area



Source: Adapted from ABARE et al, Submission 24.

- 1 Mt Hummock - Air Force & Army Bombardment
- 2 Pyri Pyri - Air Force & Army Bombardment
- 3 Raymond & Townshend Is. - Naval & Air Force Bombardment

Live Fire confirmed into Dismal Sector (pre 1993)
Explosive "Slabs" detonated (Source: Dept. Defence Submission 90 CCISB)
This is Capricorn Coast's water catchment.

NOTE:
Includes
Laser Guided Missiles
and
"Smart" Bombs